

Follies

THE INTERNATIONAL MAGAZINE
FOR FOLLIES, GROTTOS & GARDEN BUILDINGS

Issue
83

ISSN 0963-9004 Volume 21, No.4

AUTUMN 2012

Price £3.00 (\$5.00 €5.00)

Cilwendig 17



ARCHBANK

BARBARA JONES

FOLLIES ANNUAL GATHERING

GUY'S CLIFFE, WARWICKSHIRE

OWNING BEAUTY

STOWE'S 'UNREAD' CHINESE PAVILION

VISIT TO WINDSOR

Alastair Fairall

Lisa Gledhill

Carrie Jaffé

Diane James

John Elywn Kimber

Hilary Peters

Colin Stokes



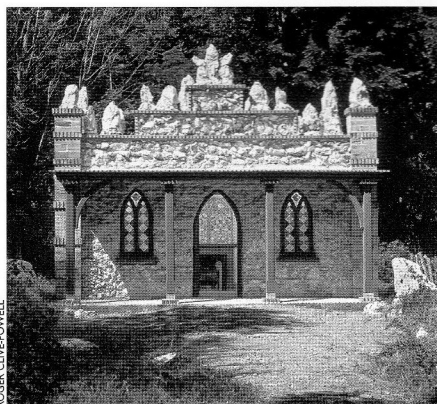
Braylsham Castle, west Sussex, doesn't look like a folly. It just is one. It looks like a spectacularly-perfect moated manor house. Begun in 1993 when its builder was given a JCB for a birthday present, it won a special award for home building because the judges couldn't fit it into any category.

Its creator, an ex-dentist, uses dental moulding techniques for his faux stone. He is now restoring/rebuilding a mill.

Gilmerton Cove, a series of tunnels beneath Edinburgh, with no features and no history are billed as Edinburgh's top tourist attraction. Wonderful what you can do with a bit of mystery. www.gilmertoncove.org.uk

The Temple Trust are having an exhibition, **29 Sept - 11 Nov**, of shell work by **Blott Kerr-Wilson** and **Suzannah Fleming**.

FF members are invited to private viewing on Saturday or Sunday, 29-30 September 12-7.



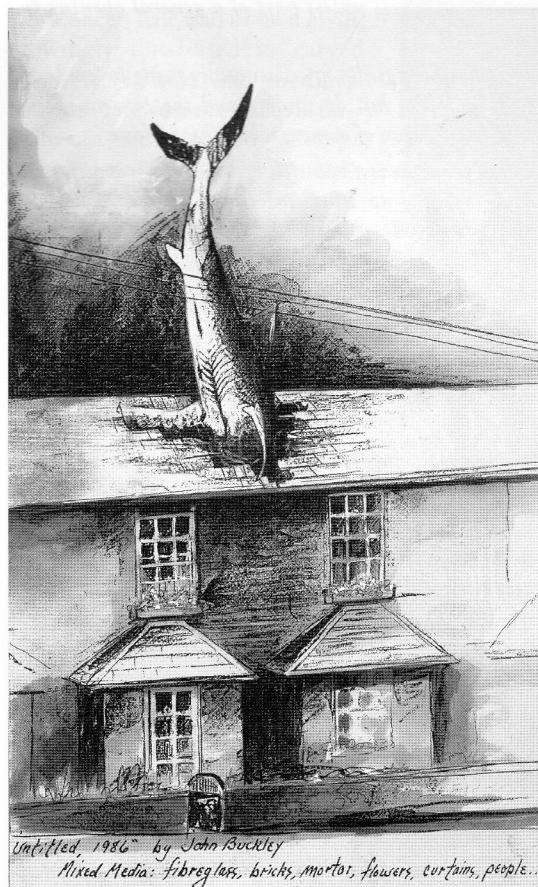
ROGER CLIVE POWELL

There will be a raffle of one piece by each artist. Some of the proceeds will go to fund the care of Cilwendeg Shell House. Sunflower and Poppy Gallery 7, Southampton Rd. London NW5 (tel: 020 7482 6171 working heritage).

Conwy (Wales) chip-eaters have been provided with a special shelter by the local Council. No longer needed as a bus shelter, it is preserved to discourage seagulls from stealing take-away food, though it's an unenterprising seagull that can't get under a conical slate roof.

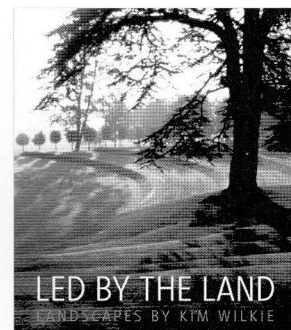
Honeycroft Farm, Surrey is still standing, still lived in by its builder and his family, still under threat of demolition from the local council. The family lived in it behind bales of straw for 4 years. Then in 2002, they removed the bales, claiming immunity from planning law. This case has yet to be decided. In the meantime a suburban villa, whose back is a castle made of disused grain silos, provides a daring family home.

Books are everywhere. Even in the news. **Kim Wilkie** (designer of Orpheus at Boughton - the other Boughton in Northants - and the landscape for Chelsea Barracks) has produced one. Surprisingly for one so popular, he talks a lot of sense.



...and another book: *The Headington Shark* by Bill Heine. A great self-publicist and he'll give FF members a discount too. www.oxfordfolio.co.uk

ABOVE:
HONEYCROFT FARM
ABOVE LEFT:
BRAYLSHAM CASTLE



LEFT:
'UNTITLED, 1986' BY JOHN BUCKLEY
FAR LEFT:
CILWENDEG SHELL HOUSE

